

# Bidding as Opener

Do you have 12+ points?

Yes

No

Are You balanced?

Pass

Yes

No

Which point range are you in?

Which point range are you in?

Range	Points	1 <sup>st</sup> Bid	2 <sup>nd</sup> Bid
<b>Minimum</b>	12-14	Longest Minor	1NT
<b>Medium</b>	15-17	1NT	
<b>Maximum</b>	18-19	Longest Minor	2NT
<b>Extras</b>	20-22	2NT	

Are You one, two or three suited?

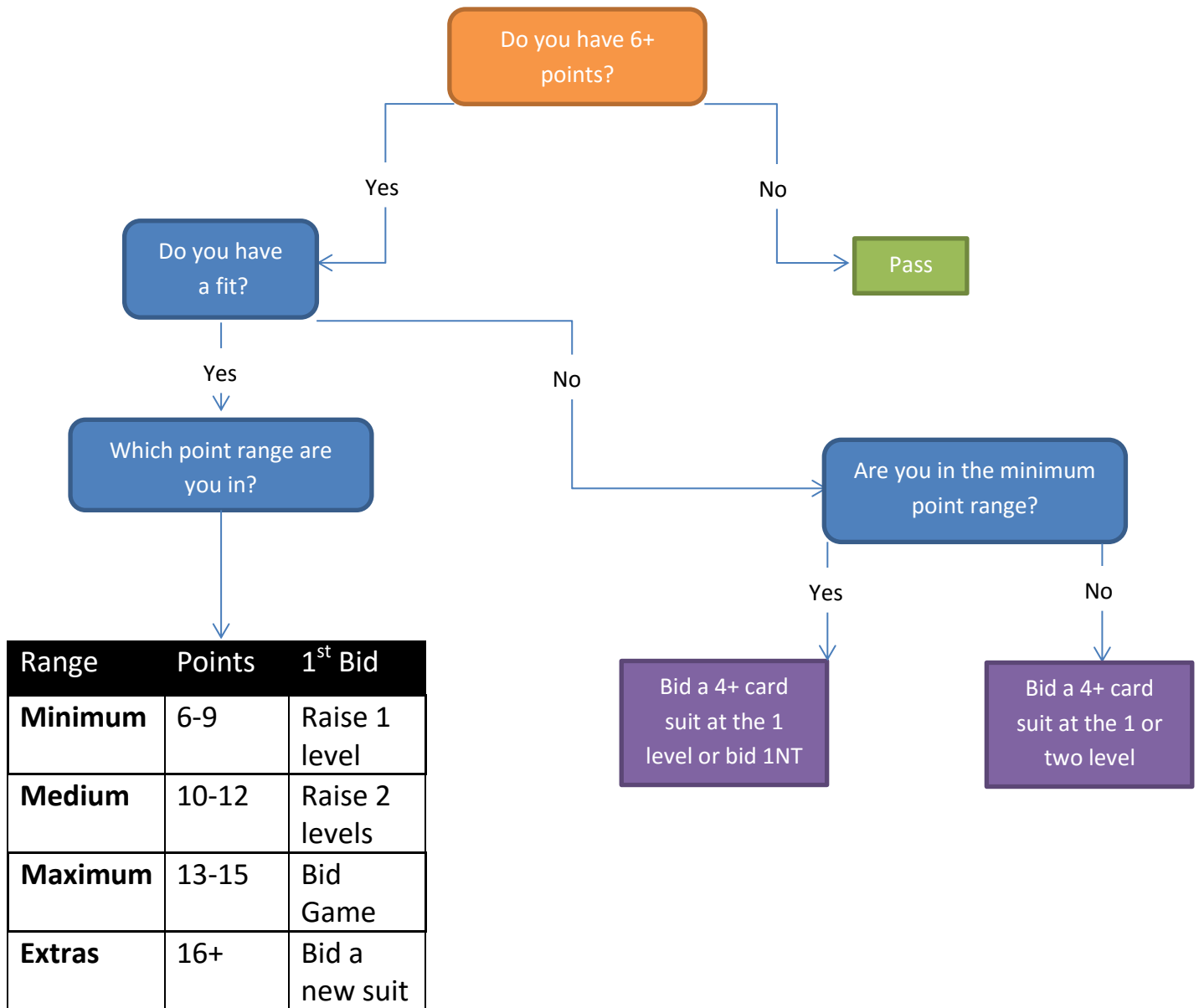
One suited

Two or Three suited

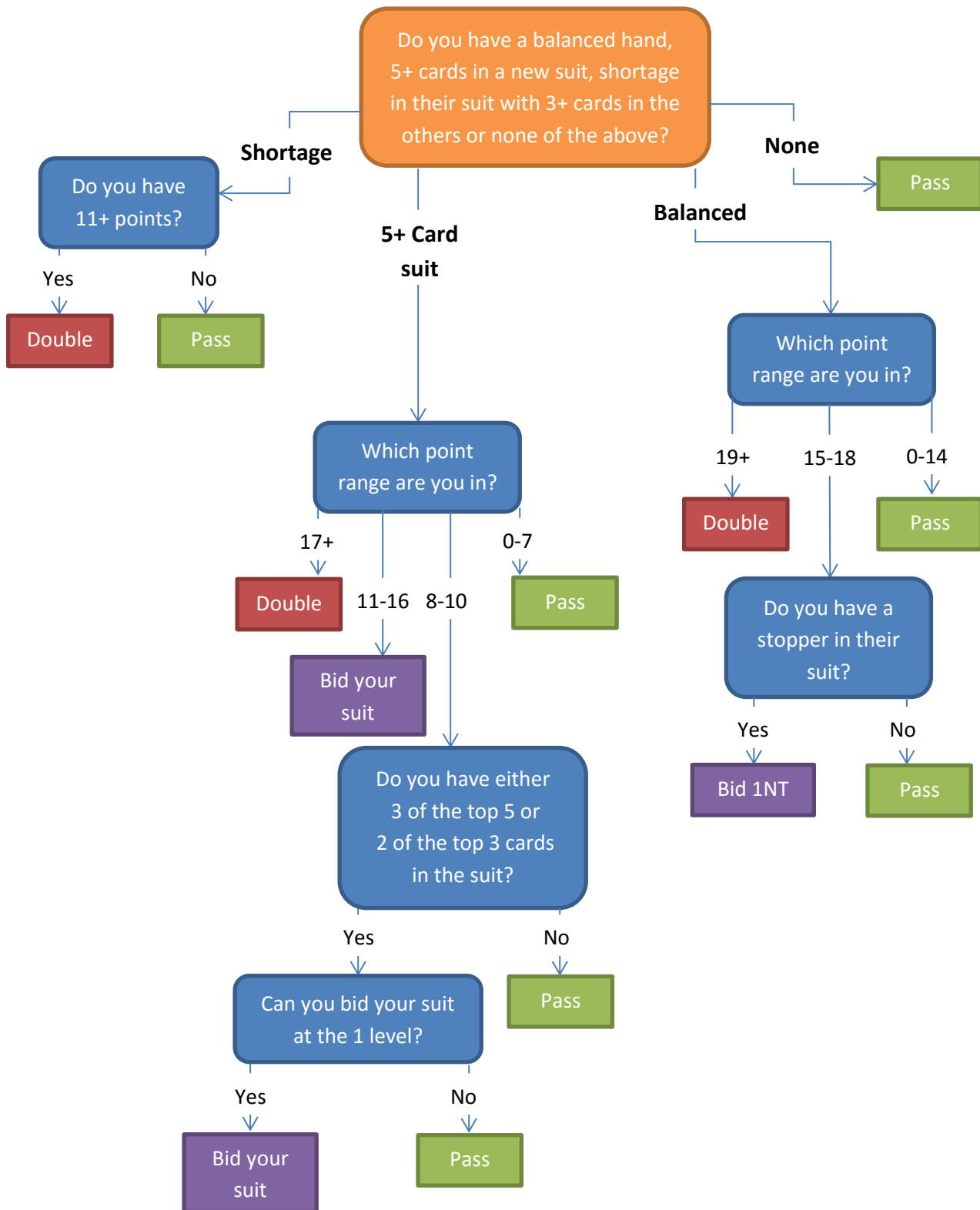
Range	Points	1 <sup>st</sup> Bid	2 <sup>nd</sup> Bid
<b>Minimum</b>	12-15	1 of Longest suit	Rebid long suit at lowest level
<b>Medium</b>	16-18	1 of Longest suit	Jump a level and rebid longest suit
<b>Maximum</b>	19-21	1 of Longest suit	Jump to 3NT

Range	Points	1 <sup>st</sup> Bid	2 <sup>nd</sup> Bid
<b>Minimum</b>	12-15	1 of Longest suit	Cheaper out of 1 <sup>st</sup> suit and other suit
<b>Medium</b>	16-18	1 of Longest suit	Bid your other suit
<b>Maximum</b>	19-21	1 of Longest suit	Bid Your other suit

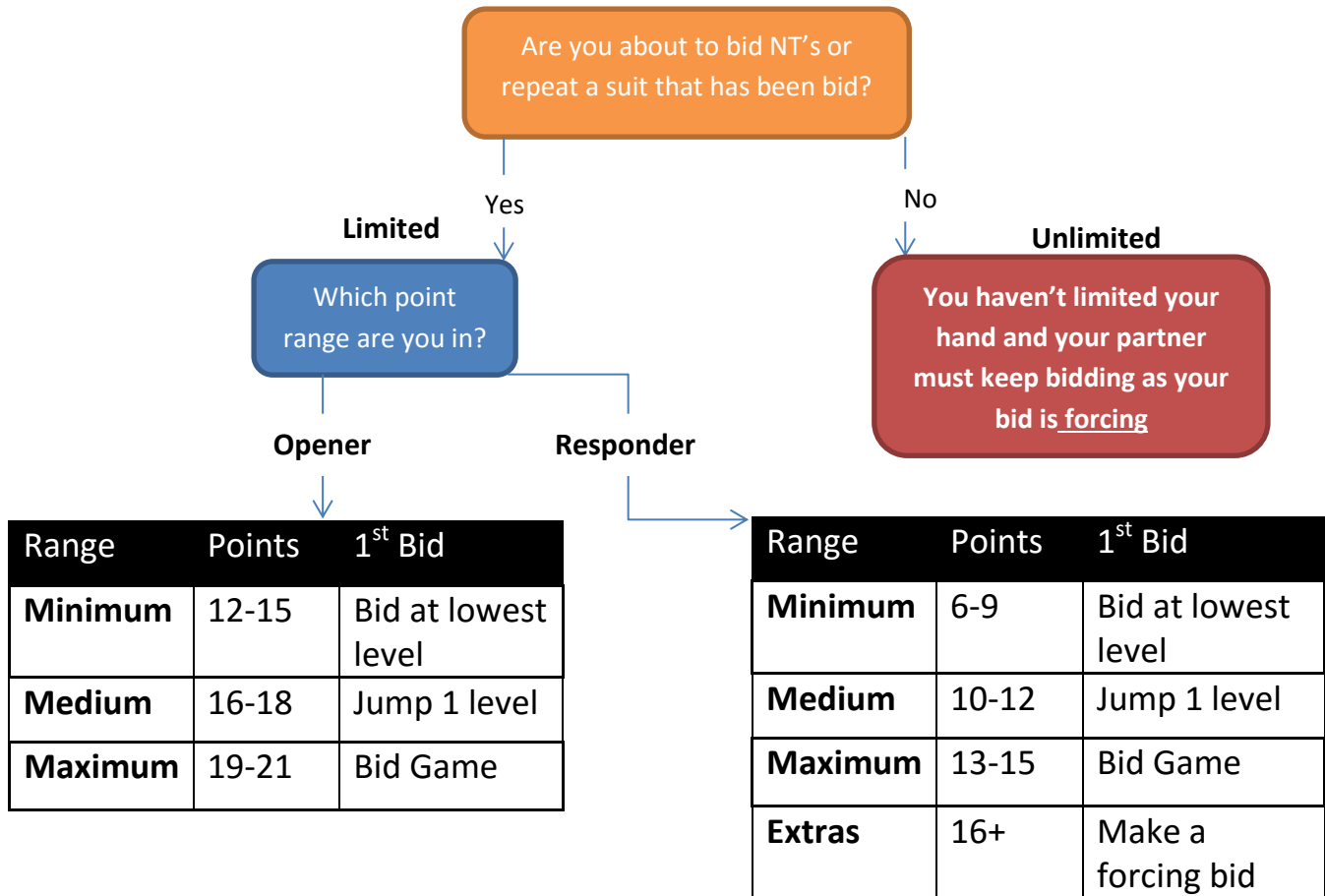
# Bidding as Responder



# The Overcaller



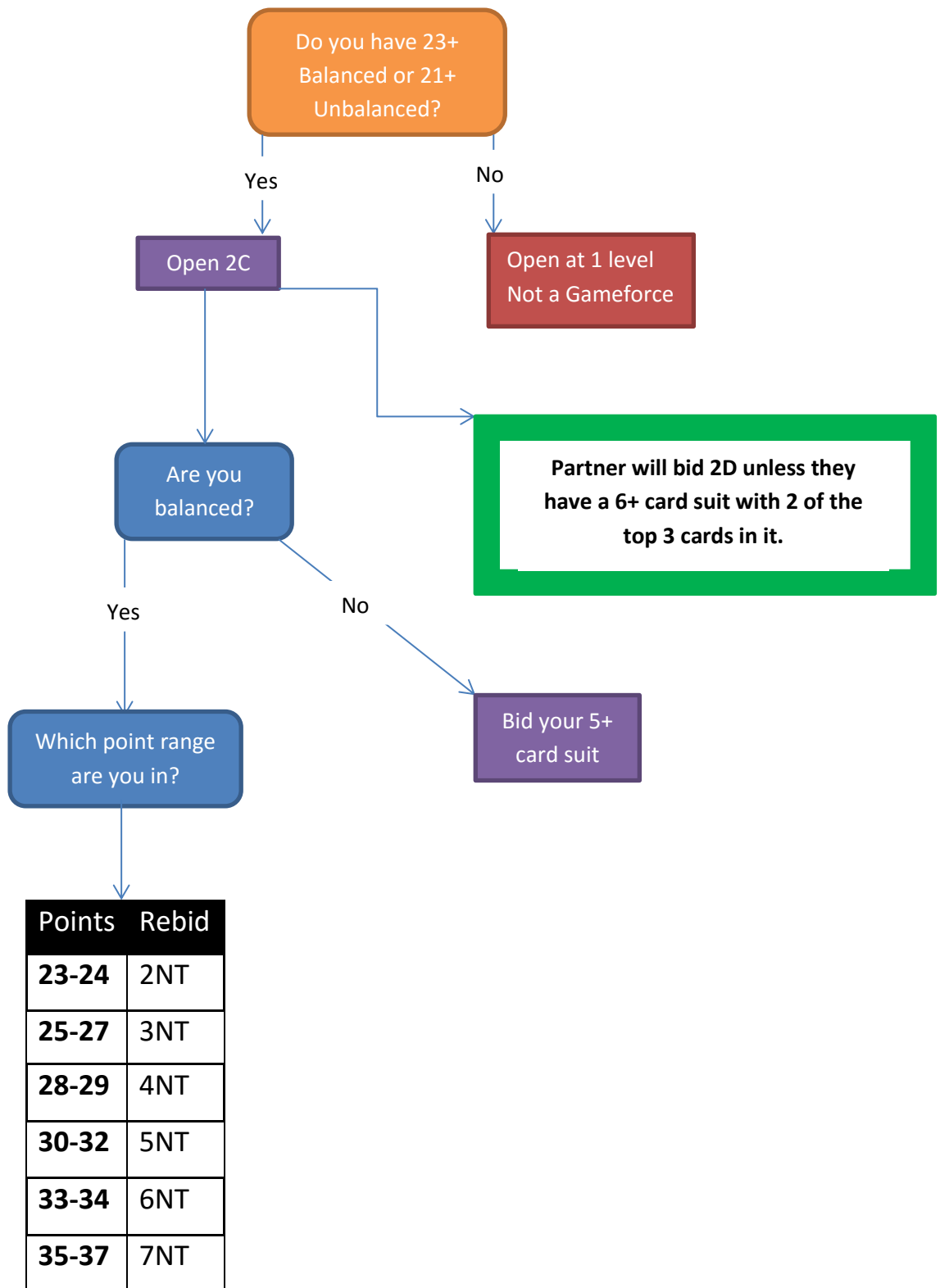
# Limiting your hand



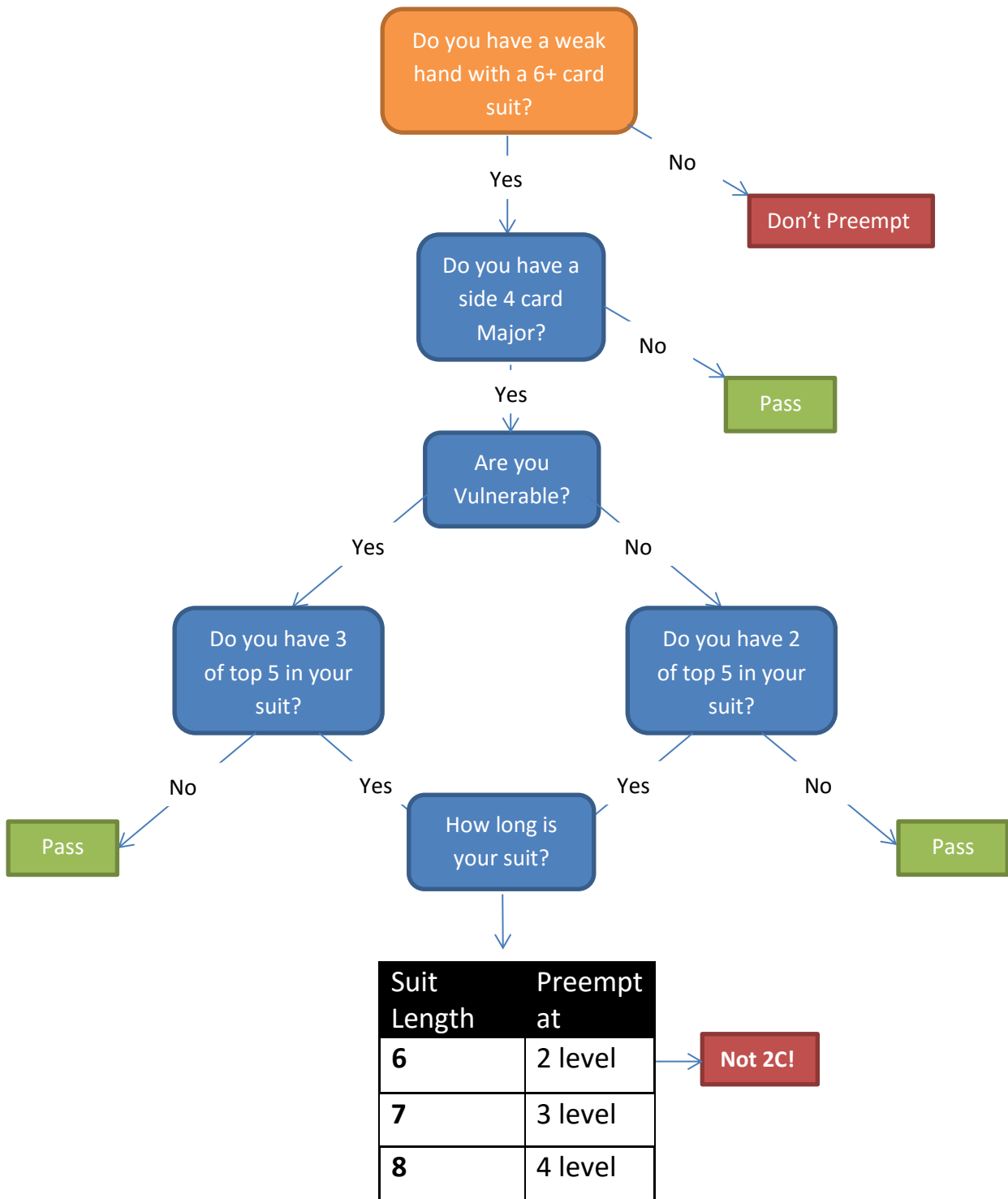
# Once partner limits their hand



# Gameforce 2C



# Preempting



# Responding to 1NT

Opposite 15-17 do you want to bid game, invite game, or not interested in game?

Do you have either a 4, 5, or 6 card Major?

None

5

6

4

Range	1 <sup>st</sup> Bid	2 <sup>nd</sup> Bid
No interest	Pass	
Invitational	2C - Stayman	2NT
Game going	3NT	

Range	1 <sup>st</sup> Bid	2 <sup>nd</sup> Bid
No interest	Pass	
Invitational	2C - Stayman	2NT
Game going	2C - Stayman	3NT

Range	1 <sup>st</sup> Bid	2 <sup>nd</sup> Bid
No interest	Transfer	Pass
Invitational	Transfer	2NT
Game going	Transfer	3NT

Range	1 <sup>st</sup> Bid	2 <sup>nd</sup> Bid
No interest	Transfer	Pass
Invitational	Transfer	3M
Game going	Transfer	4M

## Responses

2C = Stayman  
 2D = 5+ H Transfer  
 2H = 5+ S Transfer  
 2S = (5)6+ C Transfer  
 2NT = (5) 6+ D

## Responses to 2C Stayman

2D = No 4 card Major  
 2H = 4 Hearts  
 2S = 4 Spades

